

Human BAFFR/TNFRSF13C Protein

Cat. No. BAF-HM10R

Description

| | |
|-------------------------|---|
| Source | Recombinant Human BAFFR/TNFRSF13C Protein is expressed from HEK293 with His tag at the C-Terminus. It contains Ser7-Ala71. |
| Accession | Q96RJ3-1 |
| Molecular Weight | The protein has a predicted MW of 7.6 kDa. Due to glycosylation, the protein migrates to 13-25 kDa based on Bis-Tris PAGE result. |
| Endotoxin | Less than 1 EU per µg by the LAL method. |
| Purity | >95% as determined by Bis-Tris PAGE |

Formulation and Storage

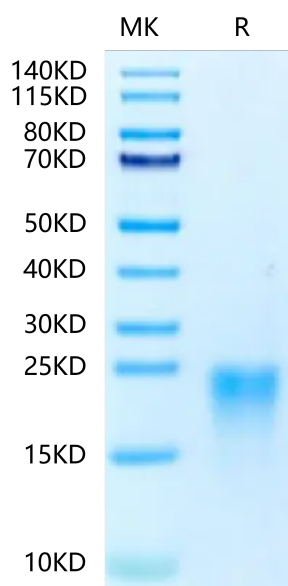
| | |
|-----------------------|---|
| Formulation | Lyophilized from 0.22 µm filtered solution in PBS (pH 7.4). Normally 8% trehalose is added as protectant before lyophilization. |
| Reconstitution | Centrifuge the tube before opening. Reconstituting to a concentration more than 100 µg/ml is recommended. Dissolve the lyophilized protein in distilled water. |
| Storage | -20 to -80°C for 12 months as supplied from date of receipt. -80°C for 3 months after reconstitution. Recommend to aliquot the protein into smaller quantities for optimal storage. Please minimize freeze-thaw cycles. |

Background

BAFF binds to three TNF receptor superfamily members: B-cell maturation antigen (BCMA/TNFRSF17), transmembrane activator and calcium-modulator and cyclophilin ligand interactor (TACI/TNFRSF13B) and BAFF receptor (BAFF R/BR3/TNFRSF13C). These receptors are type III transmembrane proteins that lack a signal peptide. Whereas TACI and BCMA bind BAFF and another TNF superfamily ligand, APRIL (a proliferation-inducing ligand), BAFF R selectively binds BAFF.

Assay Data

Bis-Tris PAGE



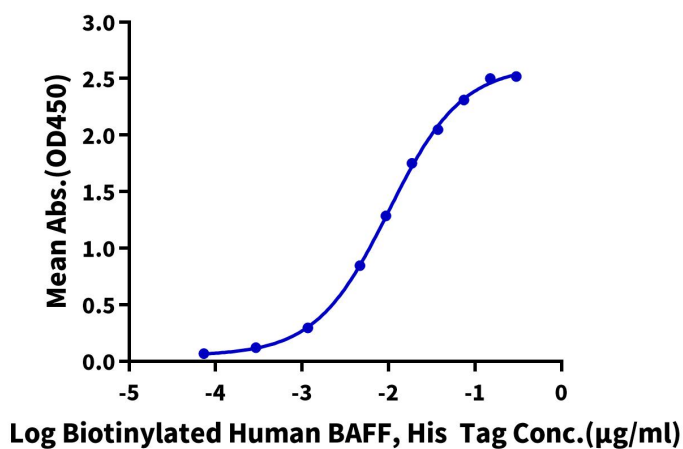
Human BAFFR on Bis-Tris PAGE under reduced conditions. The purity is greater than 95%.

ELISA Data

Assay Data

Human BAFFR, His Tag ELISA

0.2µg Human BAFFR, His Tag Per Well

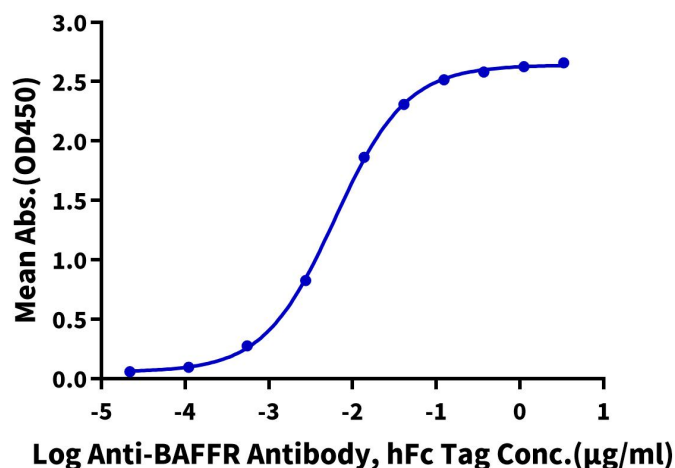


Immobilized Human BAFFR, His Tag at 2 µg/ml (100 µl/well) on the plate. Dose response curve for Biotinylated Human BAFF, His Tag with the EC50 of 10.1 ng/ml determined by ELISA (QC Test).

ELISA Data

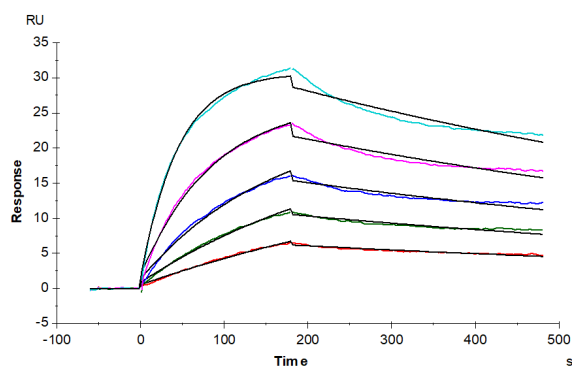
Human BAFFR, His Tag ELISA

0.05µg Human BAFFR, His Tag Per Well



Immobilized Human BAFFR, His Tag at 0.5 µg/ml (100 µl/Well). Dose response curve for Anti-BAFFR Antibody, hFc Tag with the EC50 of 6.2 ng/ml determined by ELISA.

SPR Data



Human BAFFR, His Tag captured on CM5 Chip via anti-his antibody can bind Human BAFF Trimer, hFc-Flag Tag with an affinity constant of 1.21 nM as determined in SPR assay (Biacore T200).